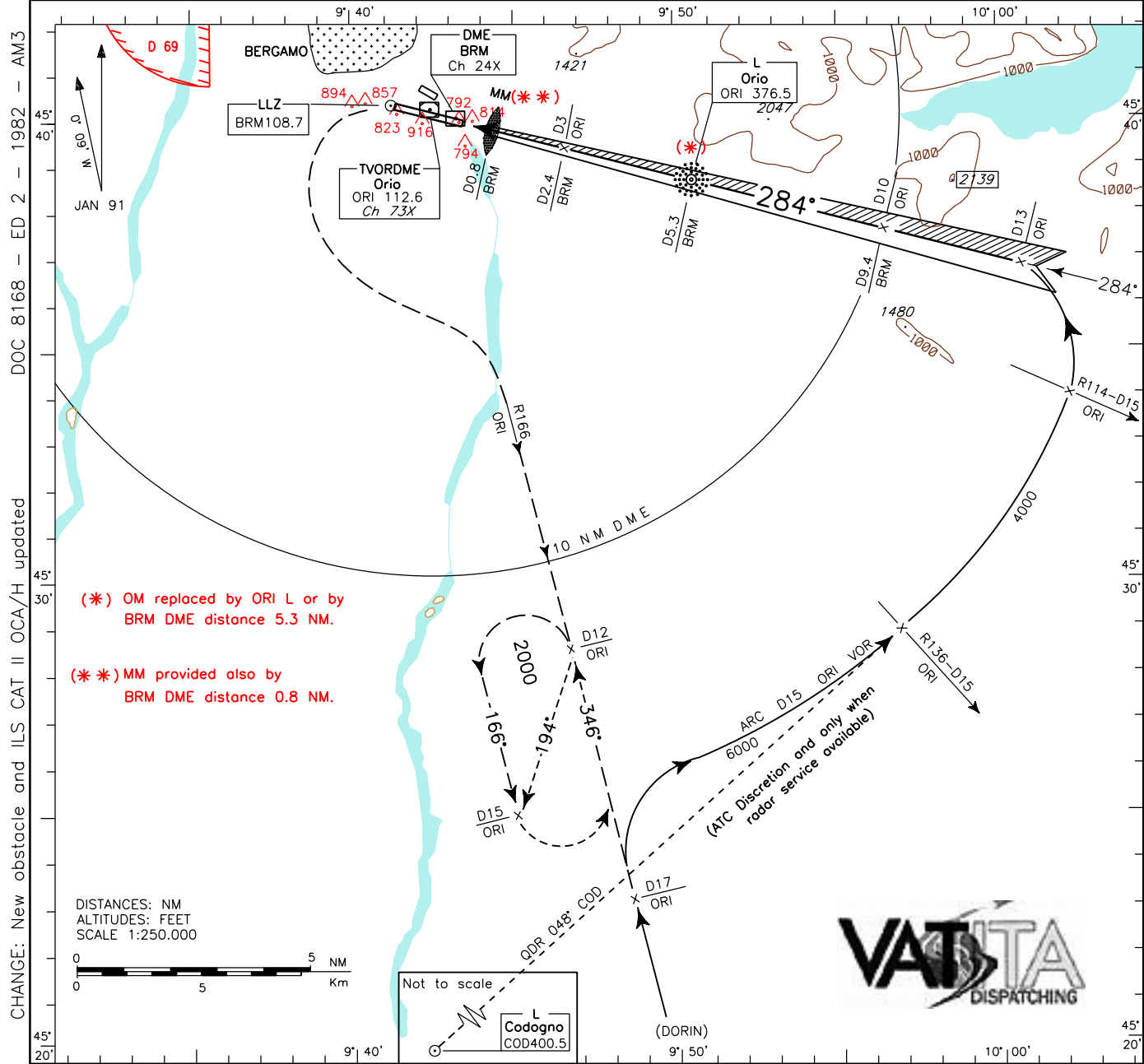


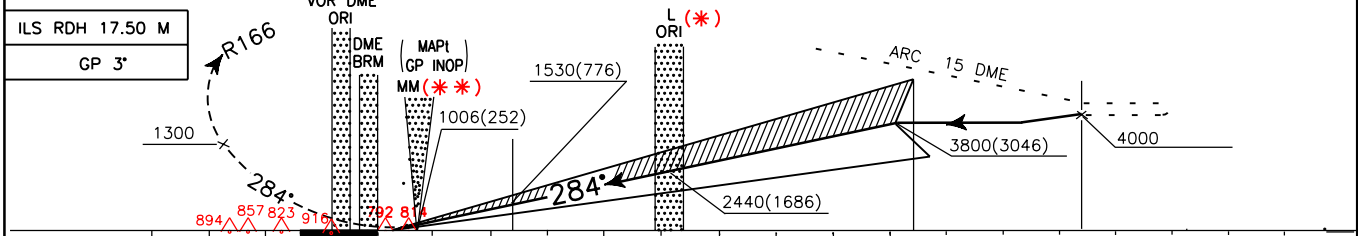
ICAO - INSTRUMENT APPROACH CHART

<p>WARNING: The whole track 284° from D 13 shall be performed with reference to LLZ signal and after its interception with GP.</p>	APP <i>Milano Arrivals</i>	TWR <i>Orio Tower</i>	AD ELEV	<p>BERGAMO/ORIO AL SERIO ILS-P RWY28</p>
	132.70	126.50 GND 120.50	782	



TRANSITION ALT 6000

MISSED APPROACH: Maintain track 284° until leaving 1300 FT then turn left to join RDL 166 ORI VOR climbing to 2000 FT. Hold between 12 and 15 DME. Inbound track 346° left turns.



STRAIGHT IN APPROACH	OCA (OCH)				WARNING: Circling RWY 10 available limited South of the RWY.	DIST BRM DME	ALT(HGT)	FT PER MIN	GS	ORI L-MM	MM-THR	MNM SECT ALT
	A	B	C	D								
ILS I	970 (216)	982 (228)	990 (236)	1001 (247)		6	2670(1916)	530	100	4.49 NM	0.62 NM	
ILS II	881 (127)	898 (144)	910 (156)	924 (170)		5	2350(1596)	640	120	2 : 15	0 : 19	
LLZ+DME	1260 (506)					4	2030(1276)	745	140	1 : 55	0 : 16	
CIRCLING RWY 10	1600 (818)		1720 (938)			3	1715 (961)	850	160	1 : 41	0 : 14	
						2	1395 (641)	955	180	1 : 29	0 : 12	

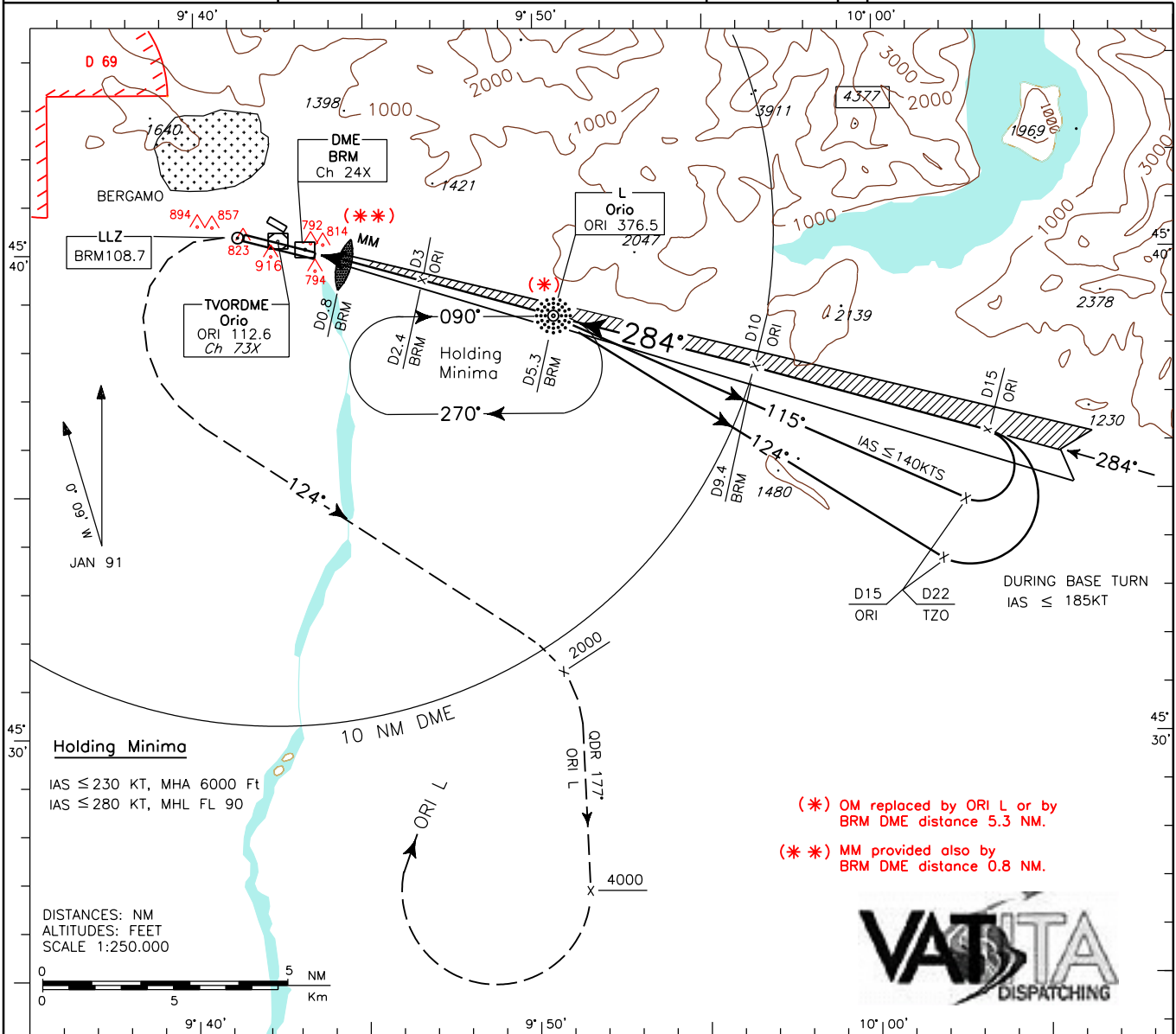
ICAO - INSTRUMENT APPROACH CHART

WARNING: The whole track 284° from D 15 shall be performed with reference to LLZ signal and after its interception with GP.

APP Milano Arrivals
132.70
TWR Orio Tower
126.50
GND 120.50

AD ELEV 782
L I M E BERGAMO/ORIO AL SERIO
R W Y 28 ILS-S

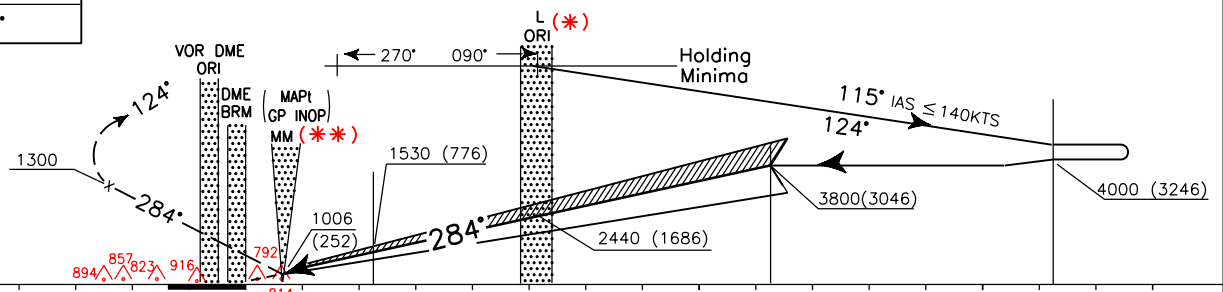
DOC 8168 - ED 2 - 1982 - AM3
CHANGE: New obstacle and ILS CAT II OCA/H updated



TRANSITION ALT 6000

MISSED APPROACH: Maintain track 284° until leaving 1300 FT then turn left on heading 124° to join QDR 177° ORI L at 2000 FT, climb to 4000 FT, then turn right to ORI L climbing to 6000 FT.

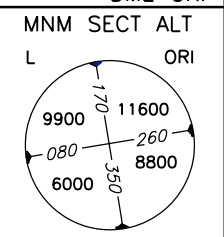
ILS RDH 17.50 M
GP 3°



DME BRM	5	4	3	2	1	0	1	2	3	4	5	6	7	8	9	10	11	12	13	14	15	16	DME BRM	
DME ORI																								DME ORI

OCA (OCH)	A	B	C	D
STRAIGHT IN APPROACH				
ILS I	970 (216)	982 (228)	990 (236)	1001 (247)
ILS II	881 (127)	898 (144)	910 (156)	924 (170)
LLZ+DME	1260 (506)			
CIRCLING RWY 10	1600 (818)		1720 (938)	

DIST BRM DME	ALT(HGT)	FT PER MIN	GS	ORI L-MM	MM-THR
6	2670(1916)	530	100	2 : 41	0 : 22
5	2350(1596)	640	120	2 : 15	0 : 19
4	2030(1276)	745	140	1 : 55	0 : 16
3	1715 (961)	850	160	1 : 41	0 : 14
2	1395 (641)	955	180	1 : 29	0 : 12



ICAO - INSTRUMENT APPROACH CHART

WARNING: The whole track 284° from D 15 shall be performed with reference to LLZ signal and after its interception with GP.

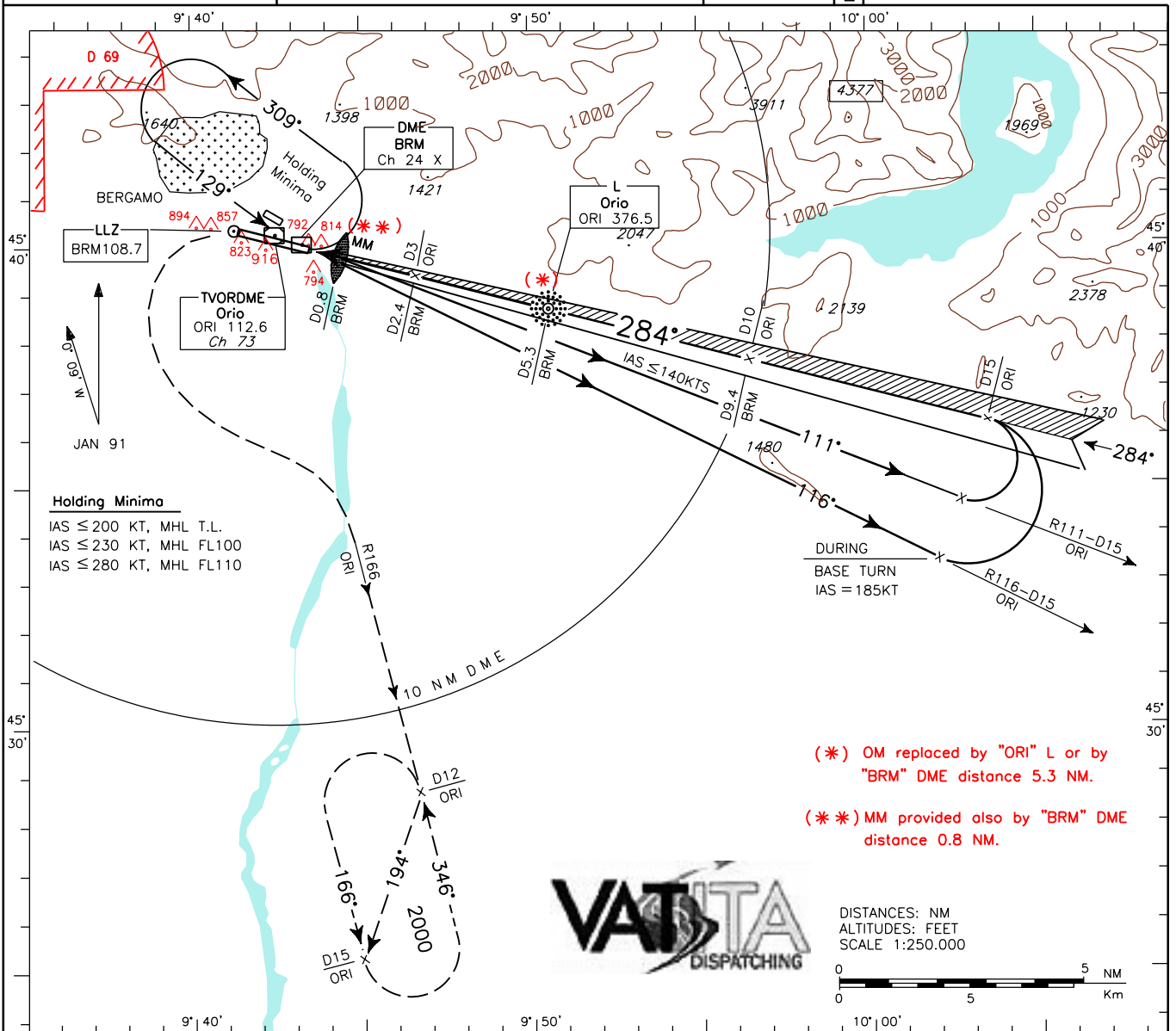
APP Milano Arrivals
132.70

TWR Orio Tower
126.50
GND (120.50)

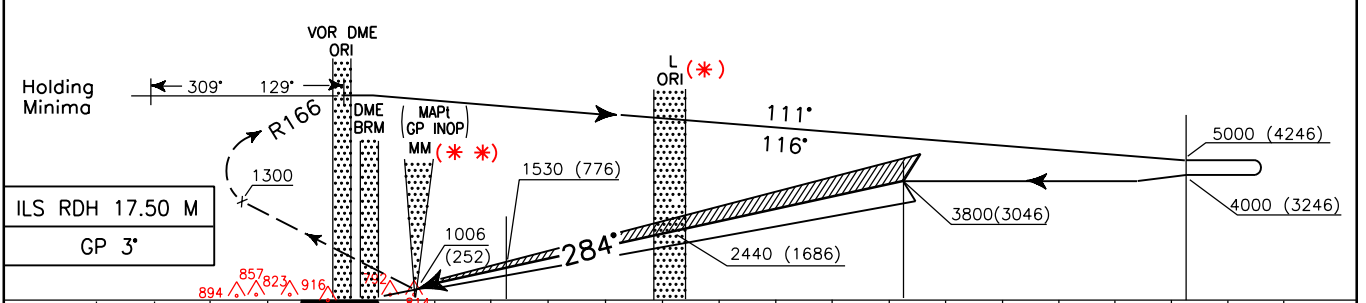
AD ELEV
782

BERGAMO/ORIO AL SERIO
ILS-T RWY28

DOC 8168 - ED 2 - 1982 - AM3
CHANGE: New obstacle and ILS CAT II OCA/H updated



TRANSITION ALT 6000
MISSED APPROACH: Maintain track 284° until leaving 1300 FT then turn left to join RDL 166 ORI VOR DME climbing to 2000 FT. Hold between 12 and 15 DME. Inbound track 346° left turns.



DME BRM	D5	D4	D3	D2	D1	0	D1	D2	D3	D4	D5	D6	D7	D8	D9	D10	D11	D12	D13	D14	D15	D16	DME BRM
DME ORI	D4	D3	D2	D1	0	D1	D2	D3	D4	D5	D6	D7	D8	D9	D10	D11	D12	D13	D14	D15	D16	DME ORI	

STRAIGHT IN APPROACH	OCA (OCH)				WARNING: Circling RWY 10 available limited South of the RWY.	DIST BRM DME	ALT(HGT)	FT PER MIN	GS	ORI L-MM	MM-THR	MNM SECT ALT L ORI
	A	B	C	D								
ILS I	970 (216)	982 (228)	990 (236)	1001 (247)		6	2670(1916)	530	100	4.49 NM	0.62 NM	
ILS II	881 (127)	898 (144)	910 (156)	924 (170)		5	2350(1596)	640	120	2 : 15	0 : 19	
LLZ+DME	1260 (506)					4	2030(1276)	745	140	1 : 55	0 : 16	
CIRCLING RWY 10						3	1715 (961)	850	160	1 : 41	0 : 14	
						2	1395 (641)	955	180	1 : 29	0 : 12	

ICAO - INSTRUMENT APPROACH CHART

APP *Milano Arrivals*
132.70

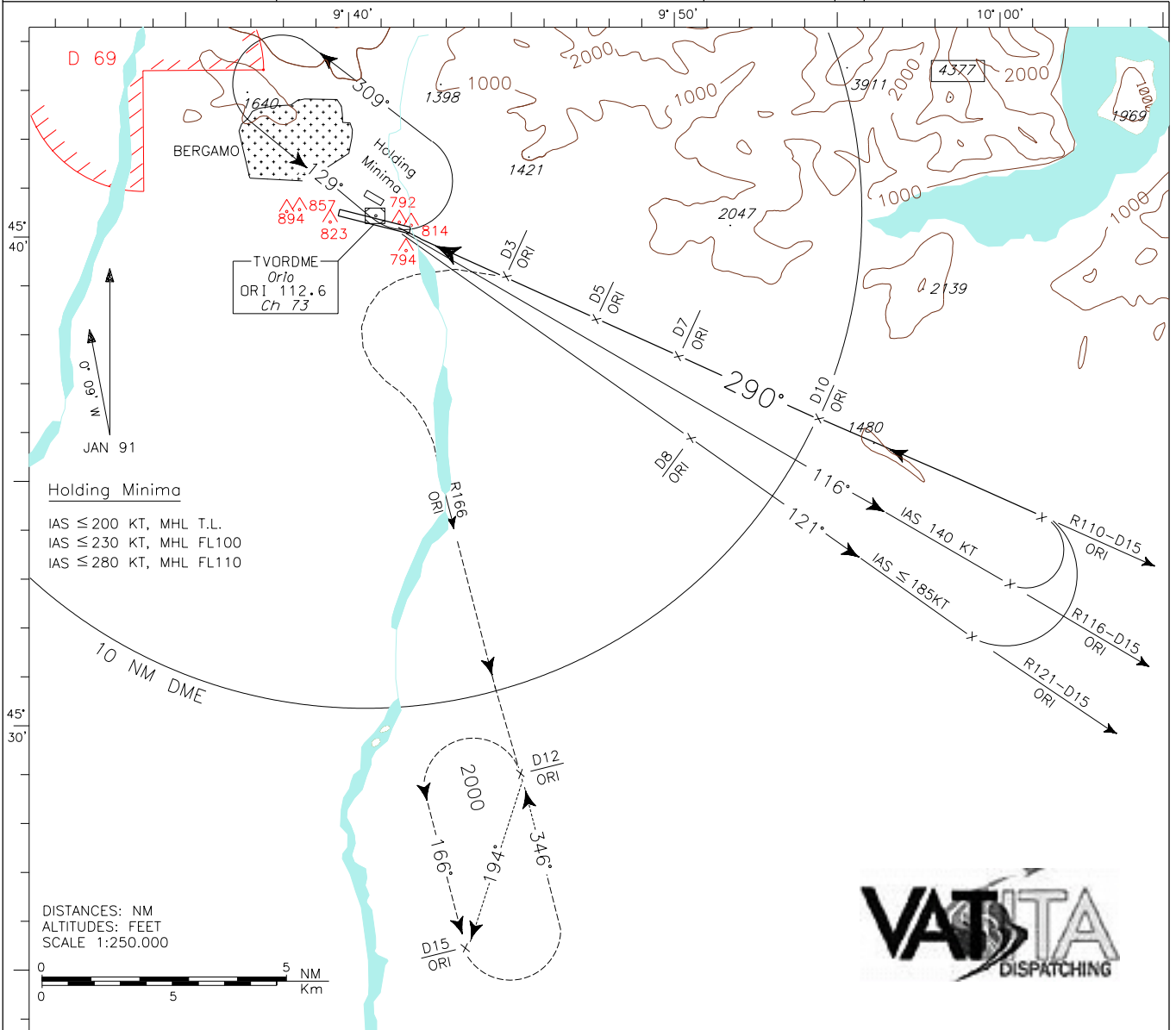
TWR *Orio Tower*
126.50
GND 120.50

AD ELEV
782

L
I
M
E

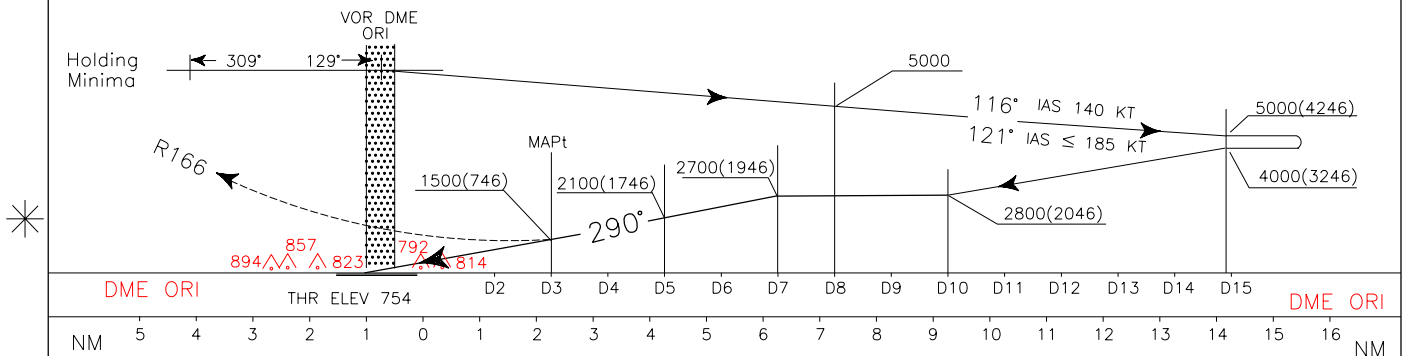
BERGAMO/ORIO AL SERIO
VOR+DME-P RWY28

DOC 8168 - ED 2 - 1982 - AM3
CHANGES: New RWY identification and AD elevation



TRANSITION ALT 6000

MISSED APPROACH: Turn left to join R166 ORI VOR climbing to 2000 FT. Hold between 12 and 15 DME ORI VOR. Inbound track 346° left turns.

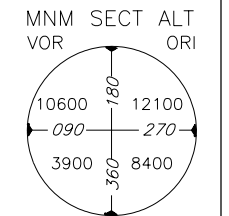


OCA (OCH)		A	B	C	D
STRAIGHT IN APPROACH	VOR+DME	1500 (746)			
CIRCLING Rwy 10		1600 (818)		1720 (938)	

Final approach track not aligned with RWY axis.

WARNING:
Circling RWY 10 available limited South of the RWY.

DIST	ALT (HGT)
7DME	2700(1946)
6DME	2400(1646)
5DME	2100(1346)
4DME	1800(1046)
3DME	1500(746)
2DME	1200(446)



ICAO – INSTRUMENT APPROACH CHART

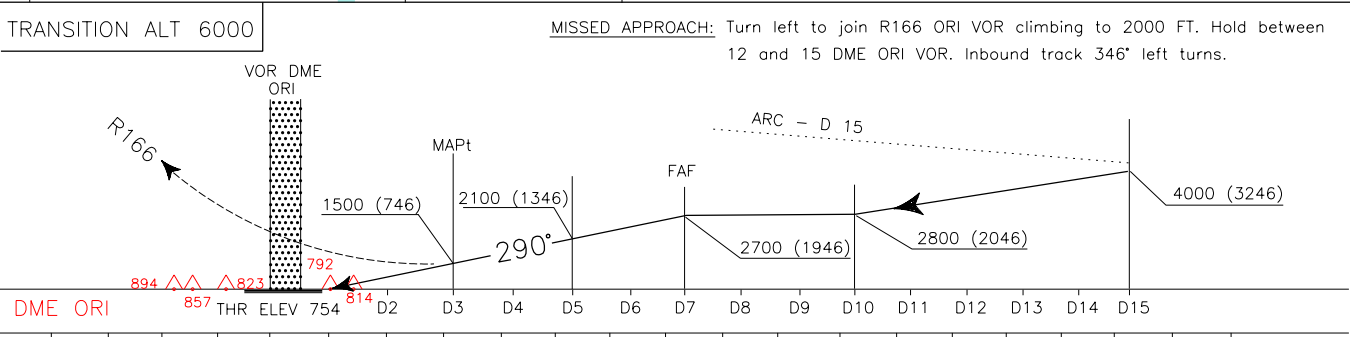
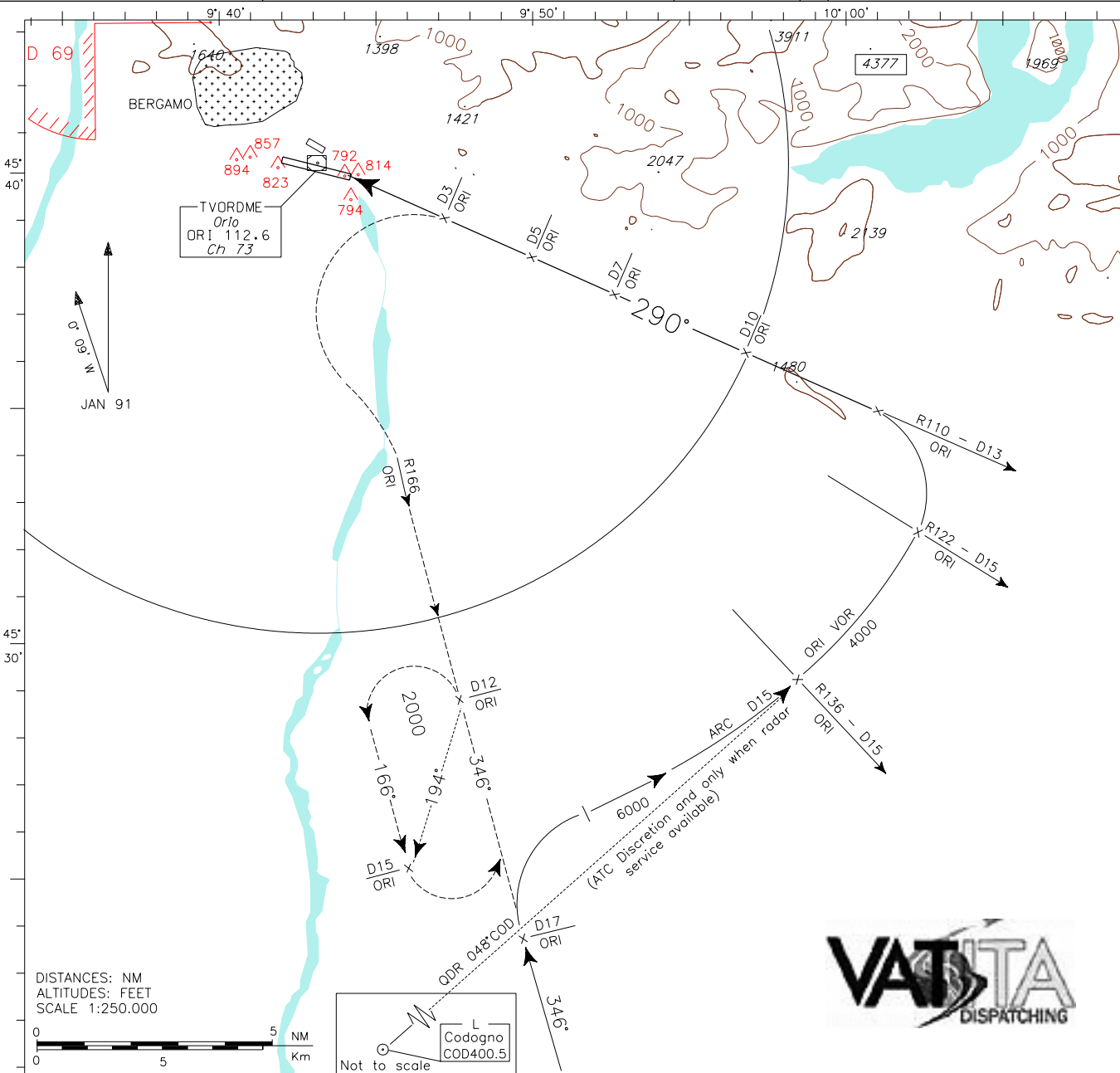
APP Milano Arrivals
132.70

TWR Orio Tower
126.50
GND 120.50

AD ELEV
782

BERGAMO/ORIO AL SERIO
L I M E
VOR+DME-S RWY28

DOC 8168 – ED 2 – 1982 – AM3
CHANGES: New RWY identification and AD elevation



TRANSITION ALT 6000		MISSED APPROACH: Turn left to join R166 ORI VOR climbing to 2000 FT. Hold between 12 and 15 DME ORI VOR. Inbound track 346° left turns.												
DME ORI		THR ELEV 754												
NM		5 4 3 2 1 0 1 2 3 4 5 6 7 8 9 10 11 12 13 14 15 16 NM												
OCA (OCH)		A	B	C	D	Final approach track not aligned with RWY axis WARNING: Circling RWY10 available limited South of the RWY.					DIST	ALT (HGT)	MNM SECT ALT	
STRAIGHT IN APPROACH	VOR+DME	1500 (746)									7DME	2700 (1946)		
											6DME	2400 (1646)		
											5DME	2100 (1346)		
											4DME	1800 (1046)		
CIRCLING RWY 10		1600 (818)		1720 (938)								3DME	1500 (746)	
												2DME	1200 (446)	